

2nd Seminar of the UsinoVerT Chair
“Planning Green Infrastructures for Industrial Cities”
ESALQ-Piracicaba, Brazil & UniLaSalle-Rouen, France
November 27 - 28, 2025

Introduction to the Seminar

Fabiana Fabri, UsinoVerT Chair Holder
&
Loïc Sauvée, Head of Research unit InTerACT

Institut polytechnique UniLaSalle, Rouen, France

Who are we?

Fabiana Fabri

- ✓ UsinoVerT Chair holder at UniLaSalle
- ✓ Profile: PhD in geography and environmental analysis
- ✓ Topics: transitions of territories towards sustainability, with focus on environmental and spatial analysis.

Loïc Sauvée

- ✓ Head of InTerACT research unit, UniLaSalle: *“Designing and supporting the transition of territories and their stakeholders towards sustainability”*.
- ✓ Profile: PhD in management sciences
- ✓ Topics: transitions of territories towards sustainability, with focus on governance dimensions.

Who are we?

Sílvia Helena Galvão de Miranda

- ✓ Professor at ESALQ/USP
- ✓ Department of Economics, Administration and Sociology
- ✓ Researcher at the Center of Advanced Studies on Applied Economics (CEPEA)

Helaine Carrer

- ✓ Professor, Dept. of Biological Sciences at ESALQ/USP
- ✓ Vice-Coordinator of the Graduate Program: International Plant Cell and Molecular Biology Esalq/USP
- ✓ Vice-Coordinator of the Biological Sciences Course, Esalq/USP

Engineer degree

Master's degree

Veterinary degree

Bachelor's degree

Doctoral degree



Amiens

Beauvais

Rennes

Rouen



- ✓ Earth, life and veterinary sciences institute
- ✓ 4 campuses in the North and West of France
- ✓ Not-for-profit school accredited by the French Ministry of Higher Education, Research and Innovation

Institut polytechnique UniLaSalle

UniLaSalle is a polytechnic institute that resulted from the merger of five engineering schools and the creation of a veterinary school. At the heart of the challenges of transition, it is designing a new generation of “Grandes Ecoles” that unite life, earth, environmental and energy sciences with industrial sciences and digital technologies.



BEAUVAIS

A multi-disciplinary campus specializing in earth, life, and environmental sciences. The Beauvais campus nestled in the countryside provides a genuine village atmosphere for 2,150 students and offers programs in geosciences, agronomy, and food and health.

2150 students



ROUEN

A global-facing campus. The Rouen campus in the heart of the MontSaint-Aignan university site offers a full range of agronomy and food industry programs, including several courses in English.

570 students



RENNES

A campus specializing in environmental engineering. The Rennes site on the Ker Lann university campus provides an ideal setting in which to study environmental engineering, sustainable development, and the circular economy.

420 students



AMIENS

An urban campus for «industrial» engineers. The Amiens campus on the banks of the River Somme, just a stone's throw from the city center, hosts a general engineering program with an emphasis on energy and digital technology.

660 students



ESALQ

Escola Superior de Agricultura Luiz de Queiroz
Universidade de São Paulo

Excellence in Agricultural, Environmental, Biological & Social Sciences

- 📍 Located in Piracicaba, Brazil – Luiz de Queiroz Campus
- 🌿 Over 100 years of excellence in agricultural, environmental, and biological sciences
- 👤 800 faculty & staff | 3,400 students
- 🏠 7 undergraduate and 15 graduate programs | 12 departments | 130+ labs
- 🌍 3,825 hectares – about 50% of USP's total area
- 🤝 Strong international cooperation and joint degrees with French institutions

About UsinoVerT Chair –Factories & Territories

- This Research Chair was created in November 2021 in partnership between UniLaSalle and Lubrizol for a period of 4 years.
- The project builds on the expertise of UniLaSalle's two research units :



Agro-ecology, Hydrogeochemistry,
Environments & Resources (UP
2018.C101)

*Developing agroecological practices,
preserving soil and water quality*



Innovation, Territory, Agriculture & Agro-
industry, Knowledge and Technology (UP
2018.C102)

*Designing and accompanying territories
and their players towards sustainability*

The Thematic Pillars of the Chair

WHAT PLACE FOR INDUSTRIAL ACTIVITY IN THE CITY AND IN THE TERRITORIES?

This research chair aims to mobilize professors, researchers and students on **economic, societal and environmental issues related to industrial activity in cities and territories.**

1. Factory, biodiversity & re-functionalization (AGHYLE) :

Rehabilitation (revegetation / agroecological practices) of soils in industrial areas.



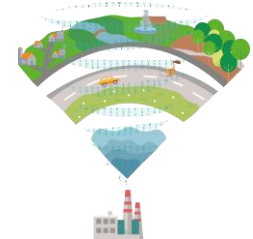
2. From acceptability to citizen appropriation (InTerACT) :

i) Societal perceptions and expectations, societal acceptability.



ii) Creation of interactions for a dialogue between citizens, other stakeholders and industrialists, and a better societal integration of industrial activities in cities.

iii) Rehabilitation of industrial sites and their integration into the territory (new eco-landscape and ecosystemic functions).



3. Data valorization (AGHYLE & InTerACT) :

Valorize environmental data from Lubrizol analyses to advance territorial knowledge in environmental sciences.

Introduction to the seminar

1. Cities all over the world face a major dilemma: meet
 - Sovereignty*
 - Sustainability*
 2. Major stakeholders will face this situation with ambivalence and contradictory points of view
 - Industry players*: having profitable businesses / here or elsewhere ?
 - Policy makers*: develop their own visions and perspectives / meet contradictory expectations
 - Citizens*: find jobs/in a livable city
 3. "Greening" cities is a possible solution to solve some of these problems, considering that
 - Greening *industrial* cities is much more demanding than greening cities
 - Not "one fits all" solutions: diversity of international situations, considering the *geohistory* of these territories
 - in terms of time: new vs old industries, globalization issues, etc.
 - in terms of space: levels of fragmentation and polarization between industrial activities/populations
 4. There is a need to "reinvent" *industrial territories* to solve this dilemma
 - Gain some sovereignty, or at least stop losing some
 - Contribute to more livable cities
- ⇒ **Challenge for researchers and practitioners**

We would like to thank:

- ✓ The UsinoVert Chair and its partners, The Lubrizol Group and UniLaSalle, for their human, organizational and financial assistance.
- ✓ ESALQ, for its assistance and welcoming.
- ✓ Métropole Rouen Normandie for its financial support.
- ✓ And of course, all our speakers for their participation, from Brazil, Portugal, Canada, Italy, Turkey, Germany, Japan and France.